



CHECK VALVE

Check valves are "automatic" valves that open with forward flow and close with reverse flow. The pressure of the fluid passing through a system opens the valve, while any reversal of flow will close the valve. Exact operation will vary depending on the type of check valve mechanism. Most common types of check valves are swing, lift (piston and ball), duo-plate, stop and tilting-disc.

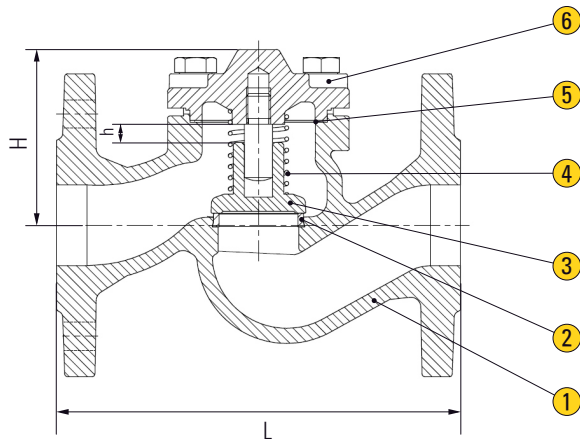


FIG 292

APPLICATION

Suitable for water, steam, oil, gases and others non-abrasive media
(Refer to corrosion resistance table for valve materials selection).

SPECIFICATION

Face To Face Dimension According to EN 558-1 Series 1
End Connection Flanged End to DIN PN16 and PN40

MATERIAL

Parts	FIG 292 - CI	FIG 292 - CS	FIG 292 - SS304 / SS316
1 Body	Cast Iron EN-GJL-250	Cast Steel GP240GH	Stainless Steel 1.4301 / 1.4408
2 Seat Ring	Stainless Steel X20Cr13	Stainless Steel X20Cr13	Stainless Steel F304 / F316
3 Disc	Stainless Steel X20Cr13	Stainless Steel X20Cr13	Stainless Steel F304 / F316
4 Spring	Stainless Steel X17CrNi16-2	Stainless Steel X17CrNi16-2	Stainless Steel X17CrNi16-2
5 Bonnet Gasket	Graphite - CrNiSt	Graphite - CrNiSt	SS304 / 316 + Graphite
6 Bonnet	Cast Iron EN-GJL-250	Cast Steel GP240GH	Stainless Steel 1.4301 / 1.4408

PREASSURE-TEMPERATURE RATINGS ACC. DIN EN 1092-1/2

Material	Temperature										
	-10°C	20°C	100°C	120°C	150°C	200°C	250°C	300°C	350°C	400°C	450°C
PN16 - Cast Iron	16 Bar	16 Bar	16 Bar	16 Bar	14 Bar	13 Bar	11 Bar	10 Bar	-	-	-
PN40 - Cast Steel	40 Bar	40 Bar	40 Bar	40 Bar	37 Bar	35 Bar	32 Bar	28 Bar	24 Bar	21 Bar	18 Bar

DIMENSIONS (mm)

Size (mm)	15	20	25	32	40	50	65	80	100	125	150	200	250	300
L	130	150	160	180	200	230	290	310	350	400	480	600	730	850
H - PN16	56	56	67	76	89	96	104	124	161	174	197	248	325	375
H - PN40	70	70	80	105	112	122	150	170	195	198	220	268	360	375
h	5	5	8	8	11	14	17	21	25	32	38	50	65	95
Weight (Kg) - PN16	2.1	2.7	3.8	7	7	9.5	15	20	29	41	66	111	198	278
Weight (Kg) - PN40	3.5	5.4	5.5	9.1	10.4	12.6	10	31	41	54	76	150	240	374

*Specification given are subject to changed without further notice.

SWING CHECK VALVE API 6D

CARBON STEEL / STAINLESS STEEL

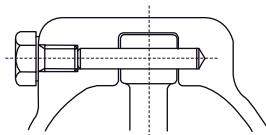
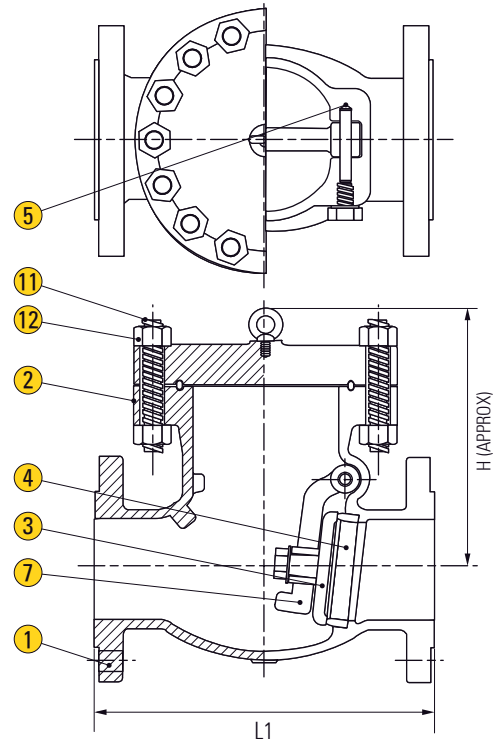
VALVES
MALAYSIA

Tel: 03-5569 6556 (3 Lines) Fax: 03-5569 8557
+ 6012 422 3782 | Email: sales@valvesmalaysia.com.my
www.valvesmalaysia.com.my

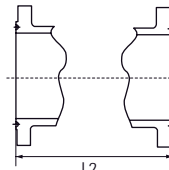


FIG SC-*1-*2-*3

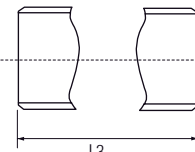
Note : *1 Class | *2 Material | *3 Connection



All Size



L2
Flanged RTJ



L3
Buttwelding End

SPECIFICATION

Designed and Manufactured API 6D
Face To Face Dimension ASME 16.10
Pressure Rating Class 150, 300, 600, 900, 1500 and 2500
Flange End Dimension ASME B16.5

BW End Dimension ASME B16.25
Test and Inspection API 598
Pressure - Temperature Rating ASME B16.34

MATERIAL

Parts	ASTM Specification						
	Standard	High Temperature Service				Low Temperature Service	Corrosion Service
1 Body	A216-WCB	A217-WC1	A217-WC6	A217-WC9	A217-C5	A352-LCB	A351-CF8M
2 Cover	A216-WCB	A217-WC1	A217-WC6	A217-WC9	A217-C5	A352-LCB	A351-CF8M
3 *Disc	A217-CA15	A217-WC1	A217-WC6	A217-WC9	A217-C5	A352-LCB	A351-CF8M
4 Body Seat Ring	A105+HARD FACE	A105+HARD FACE	A105+HARD FACE	A105+HARD FACE	A105+HARD FACE	A182-F304	A182-F316
5 Hinge Pin	A276-410	A276-410	A276-410	A276-410	A276-410	A276-304	A276-316
7 Arm	A216-WCB	A216-WC1	A216-WC6	A216-WC9	A217-C5	A352-LCB	A351-CF8H
11 Cover Bolt	A193-B7	A193-B7	A193-B7	A193-B16	A193-B16	A320-L7	A193-B8
12 Cover Nut	A194-2H	A194-2H	A194-2H	A194-4	A194-4	A194-4	A194-8

*Note : In case of 12" and larger size, We' ll use trim material overlaid one on the same or equivalent material of the body.

*Specification given are subject to changed without further notice.

CLASS 150 *(N/A for L2)

Valve Size	inch	2	2½	3	4	5	6	8	10	12	14	16	18	20	24	28	30
	mm	50	65	80	100	125	150	200	250	300	350	400	450	500	600	700	750
L1 & L3	inch	8.0	8.5	9.5	11.5	13.0	14.0	19.5	24.5	27.5	31.0	34.0	38.5	38.5	51.0	57.0	60.0
	mm	203	216	241	292	330	356	495	622	699	787	864	978	978	1295	1448	1524
H	inch	6.1	6.7	7.3	7.9	9.3	10.0	12.0	13.6	15.0	18.1	21.5	25.6	26.4	35.4	40.0	45.2
	mm	155	170	185	200	235	255	305	345	380	460	545	650	670	900	1016	1149
Weight	LB	33.1	48.5	59.5	90.4	143.3	176.4	313.1	390.3	639.5	862.2	1016.5	1411.2	1719.9	3285.5	4520.3	6392.3
	Kg	15	22	27	41	65	80	142	177	290	391	461	640	780	1490	2050	2899

CLASS 300

Valve Size	inch	2	2½	3	4	5	6	8	10	12	14	16	18	20	24	28
	mm	50	65	80	100	125	150	200	250	300	350	400	450	500	600	700
L1 & L3	inch	10.5	11.5	12.5	14.0	15.75	17.5	21.0	24.5	28.0	33.0	34.0	38.5	40.0	53.0	59.0
	mm	267	292	318	356	400	444	533	622	711	838	864	978	1016	1346	1499
L2	inch	11.12	12.12	13.12	14.62	16.38	18.12	21.62	25.12	28.62	33.62	34.62	39.12	40.75	53.88	60.0
	mm	283	308	333	371	416	460	549	638	727	854	880	994	1035	1369	1524
H	inch	6.9	7.5	8.1	8.7	11.6	12.8	14.5	18.6	20.9	22.8	27.4	31.4	30.6	39.6	45.2
	mm	175	190	205	220	295	326	368	473	530	580	695	797	776	1007	1149
Weight	LB	41.9	66.2	77.2	119.1	198.5	282.4	463.1	590.9	915	1503.8	1647.1	2756.3	3307.5	4917.2	6504.8
	Kg	19	30	35	54	90	128	210	268	415	682	747	1250	1500	2230	2950

CLASS 600

Valve Size	inch	2	2½	3	4	5	6	8	10	12	14	16	18	20	24
	mm	50	65	80	100	125	150	200	250	300	350	400	450	500	600
L1 & L3	inch	11.5	13.0	14.0	17.0	20.0	22.0	26.0	31.0	33.0	35.0	39.0	43.0	47.0	55.0
	mm	292	330	356	432	508	559	660	787	838	889	991	1092	1194	1397
L2	inch	11.62	13.12	14.12	17.12	20.12	22.12	26.12	31.12	33.12	35.12	39.12	43.12	47.25	55.38
	mm	295	333	359	435	511	562	664	791	841	892	994	1095	1200	1407
H	inch	7.5	8.3	9.6	11.8	13.3	15.7	16.9	20.7	24.2	27.6	32.0	37.8	40.5	47.3
	mm	190	210	235	300	337	400	430	525	615	700	812	960	1029	1202
Weight	LB	77.2	119.1	141.1	229.3	330.8	449.8	793.8	1367.1	1775.0	2306.4	2976.8	4454.1	5269.9	7717.5
	Kg	35	54	64	104	150	204	360	620	805	1046	1350	2020	2390	3500

CLASS 900

Valve Size	inch	2	2½	3	4	5	6	8	10	12	14	16
	mm	50	65	80	100	125	150	200	250	300	350	400
L1 & L3	inch	14.5	16.5	15.0	18.0	22.0	24.0	29.0	33.0	38.0	40.5	44.5
	mm	368	419	381	457	559	610	737	838	965	1029	1130
L2	inch	14.62	16.62	15.12	18.12	22.13	24.12	29.12	33.12	38.12	40.88	44.88
	mm	371	422	384	460	562	613	740	841	968	1038	1140
H	inch	13.1	13.7	12.6	16.7	17.4	18.9	22.2	28.3	30.7	31.8	33.0
	mm	333	349	321	423	441	479	565	721	781	807	838
Weight	LB	154.4	242.6	242.6	471.4	735.6	837.9	1375.9	2535.8	3197.3	3858.8	5336.1
	Kg	70	110	110	214	320	380	624	1150	1450	1750	2420

CLASS 1500

Valve Size	inch	2	2½	3	4	5	6	8	10	12	14
	mm	50	65	80	100	125	150	200	250	300	350
L1 & L3	inch	14.5	16.5	18.5	21.5	26.5	27.75	32.75	39.0	44.5	49.5
	mm	368	419	470	546	673	705	832	991	1130	1257
L2	inch	14.62	16.62	18.62	21.62	26.61	28.0	33.13	39.38	45.12	50.25
	mm	371	422	473	549	676	711	842	1000	1146	1276
H	inch	13.1	13.7	15.3	16.5	18.9	23.1	26.8	29.8	39.7	40.8
	mm	333	349	389	419	479	587	680	756	1008	1035
Weight	LB	154.4	242.6	374.9	661.5	1036.4	1532.5	2624.0	4079.3	7342.7	7938
	Kg	70	110	170	300	470	695	1190	1850	3330	3600

CLASS 2500

Valve Size	inch	2	2½	3	4	6	8	10	12
	mm	50	65	80	100	150	200	250	300
L1 & L3	inch	17.75	20.0	22.75	26.5	36.0	40.25	50.0	56.0
	mm	451	508	578	673	914	1022	1270	1422
L2	inch	17.87	20.25	23.0	26.88	36.5	40.87	50.88	56.88
	mm	454	514	584	683	927	1038	1292	1445
H	inch	16.38	16.5	17.36	18.86	20.12	27.99	33.5	39.37
	mm	416	419	441	479	511	711	851	1000
Weight	LB	319.7	529.1	727.5	1433.0	3086.5	5335.2	8267.3	12125.4
	Kg	145	240	330	650	1400	2420	3750	5500

*Specification given are subject to changed without further notice.

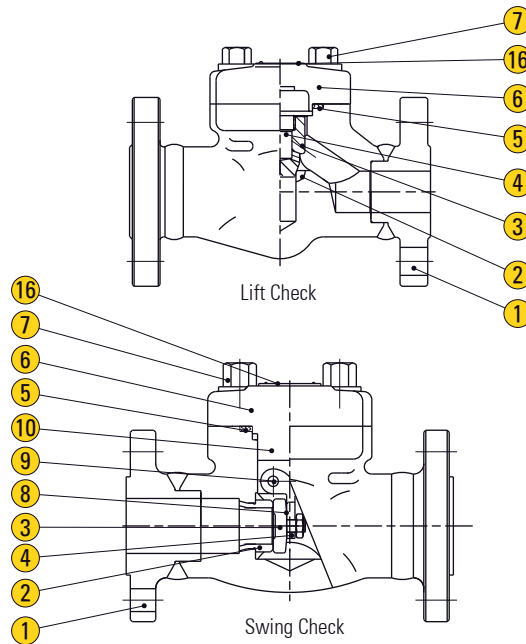
LIFT / SWING CHECK VALVE FLANGE

FORGED CARBON STEEL / STAINLESS STEEL



FIG LC/SC-*1-*2-*3

Note : *1 Class | *2 Material | *3 Connection



APPLICATION

Suitable for water, steam, oil, gases and non-abrasive media
(Refer to corrosion resistance table for valve materials selection).

SPECIFICATION

Face To Face Dimension	ASME B16.10
Pressure Rating	Class 150, 300, 600, 1500 and 2500
End To End Dimension	ASME B16.10
Flange End Dimension	ASME B16.5
BW End Dimension	ASME B16.25

CLASS 150 - 300 - 600

Unit : mm (inch)

Port	Valve Size	Center to Top	Dia. of Port Openings	End to End			Approx. Wt, Kg (Lb)		
				Class 150	Class 300	Class 600	Class 150	Class 300	Class 600
Reduced	1/2	48 (1.89)	9.5 (0.37)	108 (4.25)	152 (6.00)	165 (6.50)	1.7 (3.8)	2.2 (4.9)	2.5 (5.5)
	3/4	54 (2.13)	12.7 (0.50)	117 (4.62)	178 (7.00)	190 (7.50)	2.4 (5.3)	3.3 (7.3)	3.9 (8.6)
	1	63 (2.48)	17.5 (0.69)	127 (5.00)	203 (8.00)	216 (8.50)	3.8 (8.4)	5.1 (11.3)	5.7 (12.6)
	1-1/2	81 (3.19)	29.5 (1.16)	165 (6.50)	229 (9.00)	241 (9.50)	7.7 (17.0)	9.9 (21.8)	11.5 (25.4)
	2	105 (4.13)	35.0 (1.38)	203 (8.00)	267 (10.50)	292 (11.50)	11.4 (25.1)	13.0 (28.7)	13.8 (30.4)

CLASS 1500

Unit : mm (inch)

Port	Valve Size	Center to Top	Dia. of Port Openings	End to End	Approx. Wt, Kg (Lb)
Reduced	1/2	54 (2.13)	9.5 (0.37)	216 (8.50)	5.8 (12.8)
	3/4	63 (2.48)	12.7 (0.50)	229 (9.00)	7.8 (17.2)
	1	81 (3.19)	17.5 (0.69)	254 (10.00)	13.0 (28.7)
	1-1/2	105 (4.13)	29.5 (1.16)	305 (12.00)	20.7 (45.6)
	2	128 (5.04)	35.0 (1.38)	368 (14.25)	30.6 (67.5)

CLASS 2500

Unit : mm (inch)

Port	Valve Size	Center to Top	Dia. of Port Openings	End to End	Approx. Wt, Kg (Lb)
Full	1/2	180 (7.09)	10.0 (0.39)	264 (10.38)	17.0 (38.0)
	3/4	180 (7.09)	15.0 (0.59)	273 (10.75)	18.0 (40.0)
	1	200 (7.87)	18.0 (0.71)	308 (12.12)	23.0 (51.0)
	1-1/2	230 (9.06)	28.0 (1.10)	384 (15.12)	40.0 (88.0)
	2	250 (9.84)	35.0 (1.38)	451 (17.75)	54.0 (119.0)

*Specification given are subject to changed without further notice.

LIFT / SWING CHECK VALVE

FORGED CARBON STEEL / STAINLESS STEEL

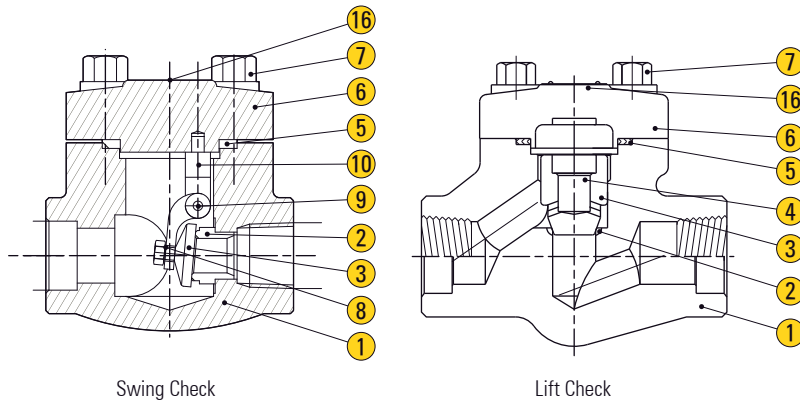


FIG LC/SC-*1-*2-*3

Note : *1 Class | *2 Material | *3 Connection

APPLICATION

Suitable for water, steam, oil, gases and non-abrasive media
 (Refer to corrosion resistance table for valve materials selection).

SPECIFICATION

Face To Face Dimension	ASME B16.10
Pressure Rating	Class 600, 800, 1500 and 2500
End To End Dimension	ASME B16.10
Flange End Dimension	ASME B16.5
BW End Dimension	ASME B16.25

CLASS 600 / 800

Unit : mm (inch)

Port	Valve Size	End to End	Center to Top	Dia. of Port Openings	Approx. Wt Kg (Lb)
Reduced	1/2	76 (2.99)	48 (1.89)	9.5 (0.37)	1.0 (2.2)
	3/4	86 (3.39)	54 (2.13)	12.7 (0.50)	1.3 (2.9)
	1	102 (4.02)	63 (2.48)	17.5 (0.69)	2.3 (5.1)
	1-1/4	152 (5.98)	81 (3.19)	22.5 (0.89)	5.0 (11.0)
	1-1/2	152 (5.98)	81 (3.19)	29.5 (1.16)	5.0 (11.0)
	2	172 (6.77)	105 (4.13)	35.0 (1.38)	7.0 (15.4)
Full	1/2	86 (3.39)	54 (2.13)	12.7 (0.50)	1.3 (2.9)
	3/4	102 (4.02)	63 (2.48)	17.5 (0.69)	2.3 (5.1)
	1	152 (5.98)	81 (3.19)	23.0 (0.91)	5.0 (11.0)
	1-1/4	172 (6.77)	105 (4.13)	29.5 (1.16)	7.0 (15.4)
	1-1/2	172 (6.77)	105 (4.13)	35.0 (1.38)	6.8 (15.0)
	2	218 (8.58)	147 (5.79)	45.5 (1.79)	10.6 (23.4)

CLASS 1500

Unit : mm (inch)

Port	Valve Size	End to End	Center to Top	Dia. of Port Openings	Approx. Wt Kg (Lb)
Reduced	1/2	86 (3.39)	54 (2.13)	9.5 (0.37)	1.3 (2.9)
	3/4	102 (4.02)	63 (2.48)	12.7 (0.50)	2.3 (5.1)
	1	152 (5.98)	81 (3.19)	17.5 (0.69)	5.0 (11.0)
	1-1/4	172 (6.77)	105 (4.13)	22.5 (0.89)	7.0 (15.4)
	1-1/2	172 (6.77)	105 (4.13)	29.5 (1.16)	7.0 (15.4)
	2	210 (8.27)	128 (5.04)	35.0 (1.38)	9.1 (20.1)

CLASS 2500

Unit : mm (inch)

Port	Valve Size	End to End	Center to Top	Dia. of Port Openings	Approx. Wt Kg (Lb)
Full	1/2	110 (4.33)	86 (3.39)	10.0 (0.39)	3.0 (7.0)
	3/4	127 (5.00)	101 (3.98)	13.0 (0.51)	4.0 (9.0)
	1	155 (6.10)	121 (4.76)	18.0 (0.71)	8.0 (18.0)
	1-1/4	210 (8.27)	157 (6.18)	23.0 (0.91)	14.0 (31.0)
	1-1/2	210 (8.27)	157 (6.18)	26.0 (1.02)	14.0 (31.0)
	2	229 (9.02)	190 (7.48)	35.0 (1.38)	20 (44.0)

*Specification given are subject to changed without further notice.

Y-CHECK VALVE

FORGED CARBON STEEL / STAINLESS STEEL

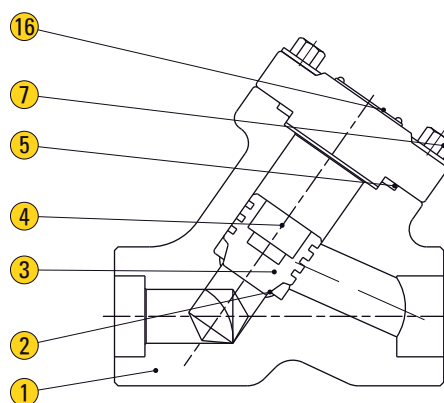


FIG GD-800YC

APPLICATION

Suitable for water, steam, oil, gases and non-abrasive media
(Refer to corrosion resistance table for valve materials selection).

SPECIFICATION

Face To Face Dimension	ASME B16.10
Pressure Rating	Class 600 and 800
End To End Dimension	ASME B16.10
Flange End Dimension	ASME B16.5
BW End Dimension	ASME B16.25

CLASS 600 / 800

Unit : mm (inch)

Port	Valve Size	End to End	Center to Top	Dia. of Port Openings	Approx. Wt Kg (Lb)
Reduced	1/2	84 (3.31)	73 (2.87)	9.5 (0.37)	1.2 (3)
	3/4	95 (3.74)	85 (3.35)	12.7 (0.50)	1.6 (4)
	1	106 (4.17)	88 (3.47)	17.5 (0.69)	2.5 (6)
	1-1/4	137 (5.39)	121 (4.76)	22.5 (0.89)	5.5 (12)
	1-1/2	137 (5.39)	121 (4.76)	29.5 (1.16)	5.4 (12.0)
	2	172 (6.77)	174 (6.85)	35.0 (1.38)	7.8 (17)
Full	1/2	95 (3.74)	85 (3.35)	12.7 (0.50)	1.3 (3)
	3/4	106 (4.17)	88 (3.47)	17.5 (0.69)	2.3 (5.1)
	1	137 (5.39)	121 (4.76)	23.0 (0.91)	5.0 (11)
	1-1/4	172 (6.77)	174 (6.85)	29.5 (1.16)	7.0 (15)
	1-1/2	172 (6.77)	174 (6.85)	35.0 (1.38)	6.8 (15.0)
	2	200 (7.87)	208 (8.19)	45.5 (1.79)	10.6 (23)

LIFT / Y-CHECK VALVE

MATERIAL

Parts	ASTM Designation												
	A105N	A350		A182					A182				
		LF2	LF3	F304/L	F316/L	F321	F347	F51	F5	F9	F11	F22	F91
1 Body	A105N	LF2	LF3	F304/L	F316/L	F321	F347	F51	F5	F9	F11	F22	F91
2 Seat	Integral Hardfaced Stellite 6												
3 Disc	A276-410		A276-316+STL			A276 -321 +STL	A276 -347 +STL	UNS S31803 +STL	A276-410				
4 Spring	A276-316*				Inconel X-750*				A276-316*				
5 Gasket	304 Spiral Wound Graphite				316 SWG	321 SWG	347 SWG	Duplex SWG	304 Spiral Wound Graphite				
6 Cover	A105N	LF2	LF3	F304/L	F316/L	F321	F347	F51	F5	F9	F11	F22	F91
7 Cover Bolt	A193-B7	A320-L7		A193-B8					A193-B16				
16 Name Plate	Aluminium			304 Stainless Steel					Aluminium				

STL: Stellite 6 faced

SWG : Spiral Wound Graphite

A182-F304/L : Dual Certificate Material for A182-F304 & A182-F304L

A182-F316/L : Dual Certificate Material for A182-F316 & A182-F316L

DUPLEX : Duplex Stainless Steel

* Other materials also available on request

** Please mark your offer if require load spring

SWING CHECK VALVE

MATERIAL

Parts	ASTM Designation												
	A105N	A350		A182					A182				
		LF2	LF3	F304/L	F316/L	F321	F347	F51	F5	F9	F11	F22	F91
1 Body	A105N	LF2	LF3	F304/L	F316/L	F321	F347	F51	F5	F9	F11	F22	F91
2 Seat Ring	A276-410		A276-316+STL			A276 -321 +STL	A276 -347 +STL	UNS S31803 +STL	A276-410+STL				
3 Disc	A276-410		A276-316+STL			A276 -321 +STL	A276 -347 +STL	UNS S31803 +STL	A276-410				
4 Hinge	A351-CF8M												
5 Gasket	304 Spiral Wound Graphite				316 SWG	321 SWG	347 SWG	Duplex SWG	304 Spiral Wound Graphite				
6 Cover	A105N	LF2	LF3	F304/L	F316/L	F321	F347	F51	F5	F9	F11	F22	F91
7 Cover Bolt	A193-B7	A320-L7		A193-B8					A193-B16				
8 Retaining Washer	316 Stainless Steel												
9 Support Pin	316 Stainless Steel												
10 Support	316 Stainless Steel												
16 Name Plate	Aluminium			304 Stainless Steel					Aluminium				

STL: Stellite 6 faced

SWG : Spiral Wound Graphite

A182-F304/L : Dual Certificate Material for A182-F304 & A182-F304L

A182-F316/L : Dual Certificate Material for A182-F316 & A182-F316L

DUPLEX : Duplex Stainless Steel

* Other materials also available on request

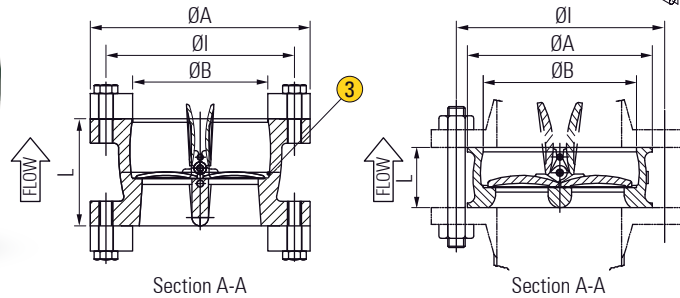
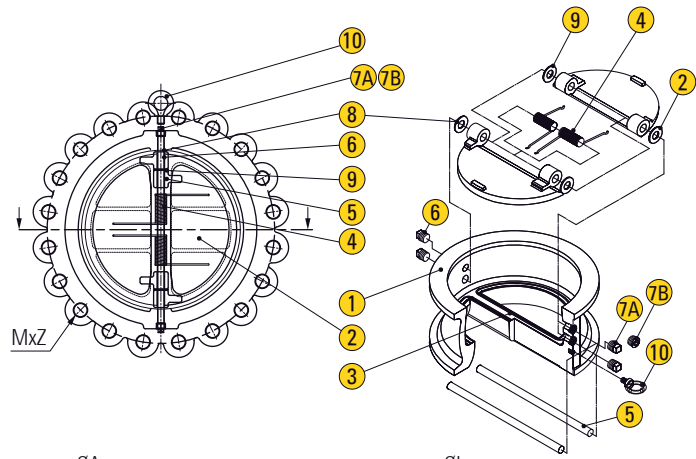
*Specification given are subject to changed without further notice.

WAFER / LUG DUAL PLATE CHECK VALVE

CAST IRON / CARBON STEEL / STAINLESS STEEL



FIG C1000



FEATURES

- Small and light quick reaction vertical and horizontal bubble tight
- Low pressure drop
- No slamming, plates start closing against the flow before the stops
- Seat : NBR / EPDM / Viton / Metal

PRESSURE RATING

150# / 300# / 600# / 900# / 1500# / 2500#
PN6/PN10/16/PN25/40/PN50/PN110/PN150/PN260/PN420
5K/10K/16K/20K/30K/40K/63K

SPECIFICATION

- Design According to API 594
- Shell Wall Thickness According to API 594
 - Face to Face According to API 594
 - Flanged Dimension According to ANSI B16.5
 - Pressure -Temperature Rating According to ASME B16.34
 - Pressure Test According to API 598

MATERIAL

Parts	Material
1 Body	A126 CLASS B A536 65-45-12 CF8M/CF8/WCB SCS314/SCS13/WCB 1.4408/1.4308/WCB
2 Plate	A126 CLASS B SCS314/SCS13/WCB 1.4408/1.4308/WCB
3 Seat	VITON / EPDM / NBR
4 Spring	SUS316-WPA
5 Hinge Pin	SUS316/SUS304
6 Stop Pin	SUS316/SUS304
7A & 7B Plug	A105
8 Body Bearing	SS316
9 Plate Bearing	SS316
10 Eye-bolt	A105

DIMENSIONS (mm)

Unit : mm

Class	Size	DN50	DN65	DN80	DN100	DN125	DN150	DN200	DN250	DN300	DN350	DN400	DN450	DN500
		2"	2"-1/2"	3"	4"	5"	6"	8"	10"	12"	14"	16"	18"	20"
150	L	60	67	73	73	87	98	127	146	181	184	191	203	219
	ØA	152	178	191	229	254	279	343	406	483	533	597	635	699
	ØB	60	73	89	114	141	168	219	273	324	356	406	457	508
	ØI	120.6	139.7	152.4	190.5	215.9	241.3	298.5	362.0	431.8	476.3	539.8	577.9	635.0
	MxZ	4x5/8"	4x5/8"	4x5/8"	8x5/8"	8x5/8"	8x5/8"	8x5/8"	12x7/8"	12x7/8"	12x1"	12x2"	16x1-1/8"-UN	20x1-1/8"-UN
300	L	60	67	73	73	87	98	127	146	181	222	232	264	292
	ØA	165	191	210	254	279	318	381	445	521	584	648	711	775
	ØB	60	73	89	114	141	168	219	273	324	356	406	457	508
	ØI	127.0	149.4	168.1	200.2	235.0	269.7	330.2	387.4	450.9	514.4	571.5	628.7	685.8
	MxZ	8x5/8"	8x3/4"	8x3/4"	8x3/4"	8x3/4"	12x3/4"	12x7/8"	16x1"	16x1-1/8"-UN	20x1-1/8"-UN	20x1-1/4"-UN	20x1-1/4"-UN	20x1-1/4"-UN
600	L	60	67	73	79	105	136	165	213	229	273	305	362	368
	ØA	165	191	210	273	330	356	419	508	559	603	686	743	813
	ØB	60	73	89	114	151	168	219	273	324	356	406	457	508
	ØI	127.0	149.4	168.1	215.9	266.7	292.1	349.3	431.8	489.0	527.1	603.3	654.1	723.9
	MxZ	8x5/8"	8x3/4"	8x3/4"	8x7/8"	8x1"	12x1"	12x1-1/8"-UN	16x1-1/4"-UN	20x1-1/4"-UN	20x1-3/8"-UN	20x1-1/2"-UN	20x1-5/8"-UN	20x1-5/8"-UN

*Specification given are subject to changed without further notice.

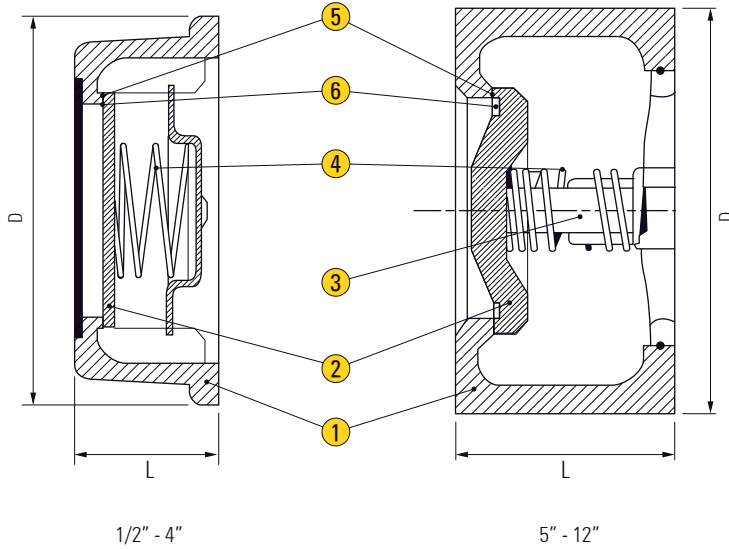


FIG 377

APPLICATION

Suitable for water, steam, oil, gases and non-abrasive media
(Refer to corrosion resistance table for valve materials selection).

SPECIFICATION

Face To Face Dimension
End Connection
Pressure Rating
Working Temperature

DIN 3202 Part 3-K4
Wafer Type to suit DIN, BS and ANSI Flanges
DN 15 to DN 300, 40 Bar maximum
Up to 400°C

MATERIAL

Parts	Material
1 Body	WCB SS304 SS316
2 Disc	WCB SS304 SS316
3 Holder	SS304 SS304 SS316
4 Spring	SS304 SS304 SS316
5 Seat	SS304 SS304 SS316
6 Seal	SS304 SS304 SS316

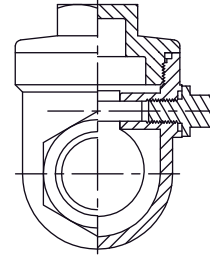
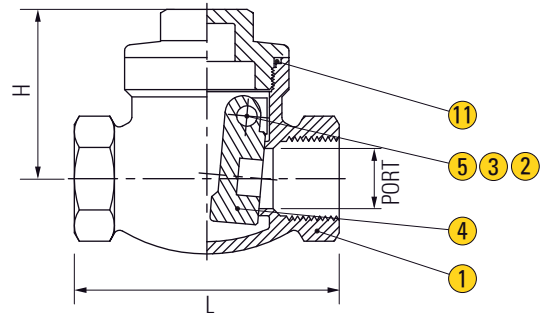
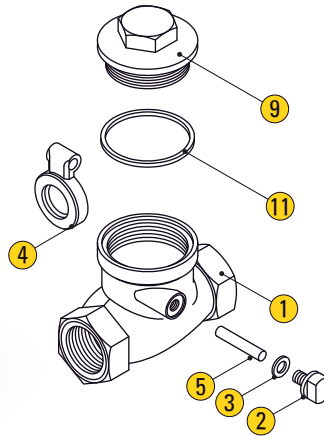
PRIME OUT-FORM DIMENSIONS

Unit : mm (inch)

Size	DIN	15	20	25	32	40	50	65	80	100	125	150	200	250	300
	NPS (inch)	1/2	3/4	1	1-1/4	1-1/2	2	2-1/2	3	4	5	6	8	10	12
PN40/300LB	L	16	19	22	28	32	40	46	50	60	90	106	140	200	250
	D	50	60	70	81	91	106	126	150	170	188	224	292	330	378

*Specification given are subject to changed without further notice.

SWING CHECK VALVE SCREW END STAINLESS STEEL



MATERIAL

Parts	Material
1 Body	1.4408 / EN1503-1
2 Plug	SS316
3 Plug seal	PTFE.
4 Disc	ASTM A351Gr.CF8M
5 Hanger Pin	SS316
9 End Cap	1.4408 / EN1503-1
11 Body Seal	PTFE.

APPLICATION

Suitable for general chemical and industrial application

SPECIFICATION

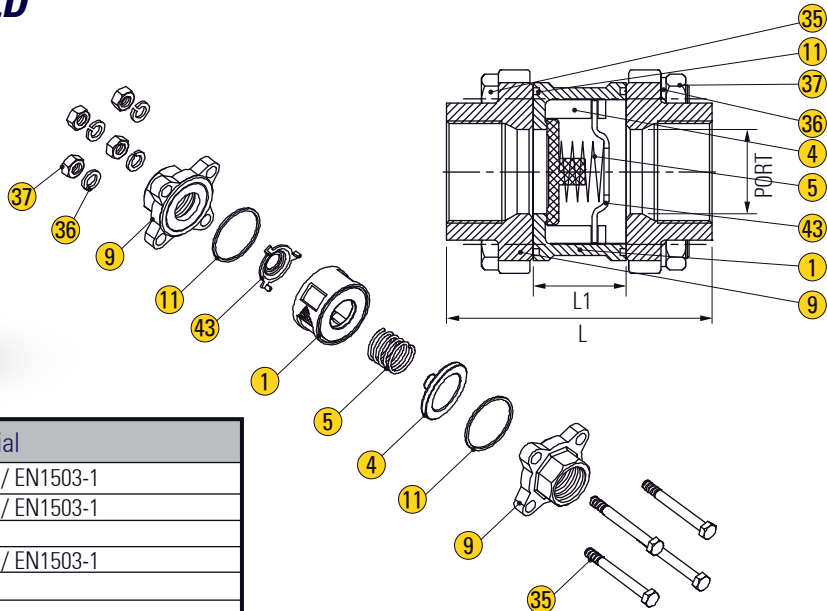
End connection	Threaded end
Operating pressure	0.15kgf/cm ²
Working pressure	16 Bar (CWP)
Working Temperature	-20 ~ 180°C

DIMENSIONS

Unit : mm

Size	DN8	DN10	DN15	DN20	DN25	DN32	DN40	DN50	DN65	DN80
PORT	11.0	15.0	15.0	20.0	25.0	32.0	40.0	50.0	65.0	80.0
L	65.0	65.0	65.0	80.0	90.0	105.0	120.0	140.0	180.0	200.0
H	42.0	42.0	42.0	51.0	60.0	67.0	75.0	81.0	93.0	104.0

THREE PIECE DISCO CHECK VALVE SCREW END / BUTT WELD STAINLESS STEEL



MATERIAL

Parts	Material
1 Body	1.4408 / EN1503-1
4 Disc	1.4408 / EN1503-1
5 Spring	SS316
9 End Cap	1.4408 / EN1503-1
11 Body Seal	PTFE.
35 Body Bolt	SS304
36 Bolt Washer	SS304
37 Bolt Nut	SS304
43 Holder	SS316

DIMENSIONS

Unit : mm

Size	DN8	DN10	DN15	DN20	DN25	DN32	DN40	DN50	DN65	DN80	DN100
PORT	12.0	12.0	15.0	20.0	25.0	32.0	40.0	50.0	65.0	80.0	100.0
L	53.0	53.0	67.0	69.0	79.0	92.0	101.0	115.0	145.0	154.0	180.0
L1	14.0	14.0	18.0	22.0	27.5	32.0	37.0	47.0	47.0	55.0	70.0

APPLICATION

Suitable for general chemical and industrial application

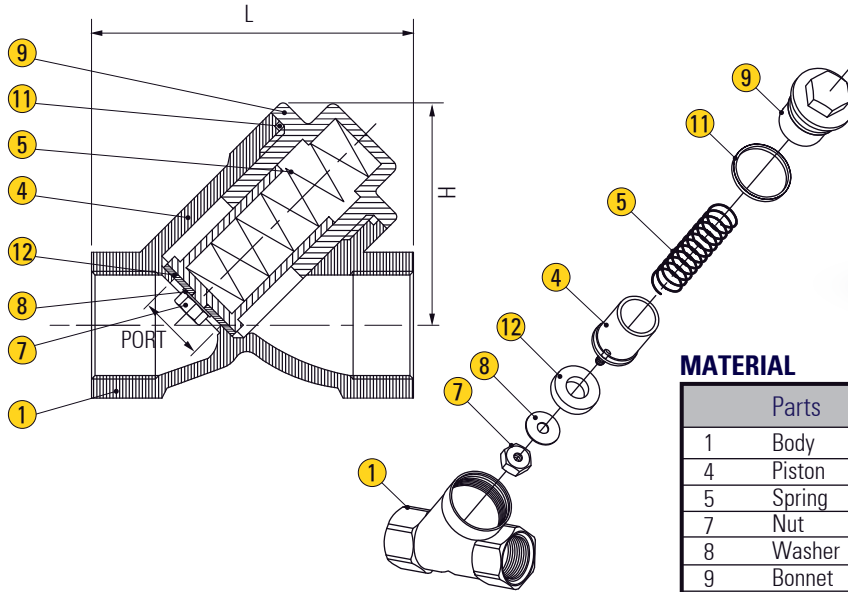
SPECIFICATION

End connection	Threaded end
Working pressure	40 Bar (CWP)
Working Temperature	-20 ~ 180°C

Y TYPE SPRING CHECK VALVE

SCREW END

STAINLESS STEEL



MATERIAL

Parts	Material
1 Body	1.4408 / EN1503-1
4 Piston	CF8M / EN1503-2
5 Spring	SS316
7 Nut	SS316
8 Washer	SS316
9 Bonnet	1.4408 / EN1503-1
11 Body Seal	PTFE.
12 Seat	PTFE.

APPLICATION

Suitable for general chemical and industrial application

SPECIFICATION

End connection Threaded end
 Working pressure 40 Bar (CWP)
 Working Temperature -20 ~ 180°C
 Operating pressure 0.15kgf/cm²

DIMENSIONS

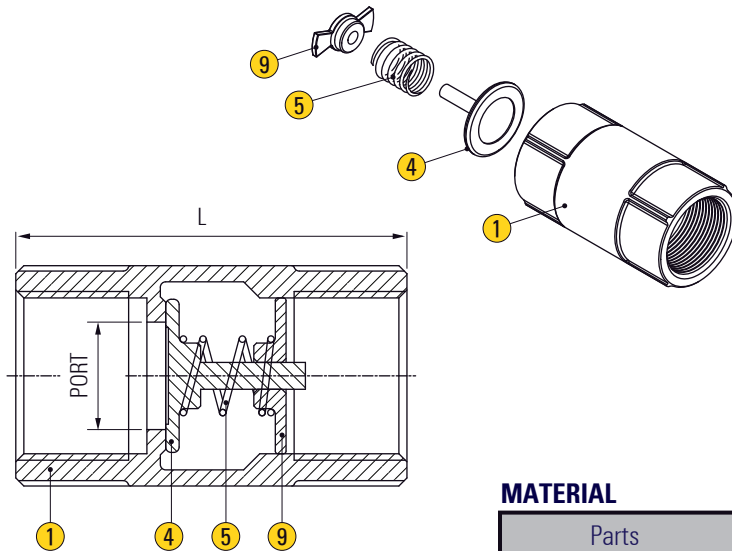
Unit : mm

Size	DN8	DN10	DN15	DN20	DN25	DN32	DN40	DN50
PORT	1/4"	3/8"	1/2"	3/4"	1"	1-1/4"	1-1/2"	2"
L	65.0	65.0	65.0	80.0	90.0	105.0	120.0	140.0
H	43.0	43.0	45.0	52.0	67.0	70.0	78.0	95.0

INLINE SPRING CHECK VALVE

SCREW END

STAINLESS STEEL



MATERIAL

Parts	Material
1 Body	1.4408 / EN1503-1
4 Disc	SS316
5 Spring	SS316 / SS304
9 Screw	SS316

APPLICATION

Suitable for general chemical and industrial application

SPECIFICATION

End connection Threaded end
 Working pressure 800 Psi / 40 Bar (CWP)
 Temperature range -4 to 365°F / -20 ~ 180°C
 Pressure test according to API 598 or EN 12266

DIMENSIONS

Unit : mm

Size	DN15	DN20	DN25	DN32	DN40	DN50
PORT	1/2"	3/4"	1"	1-1/4"	1-1/2"	2"
L	57.0	63.0	72.8	81.0	91.7	102.4

*Specification given are subject to changed without further notice.